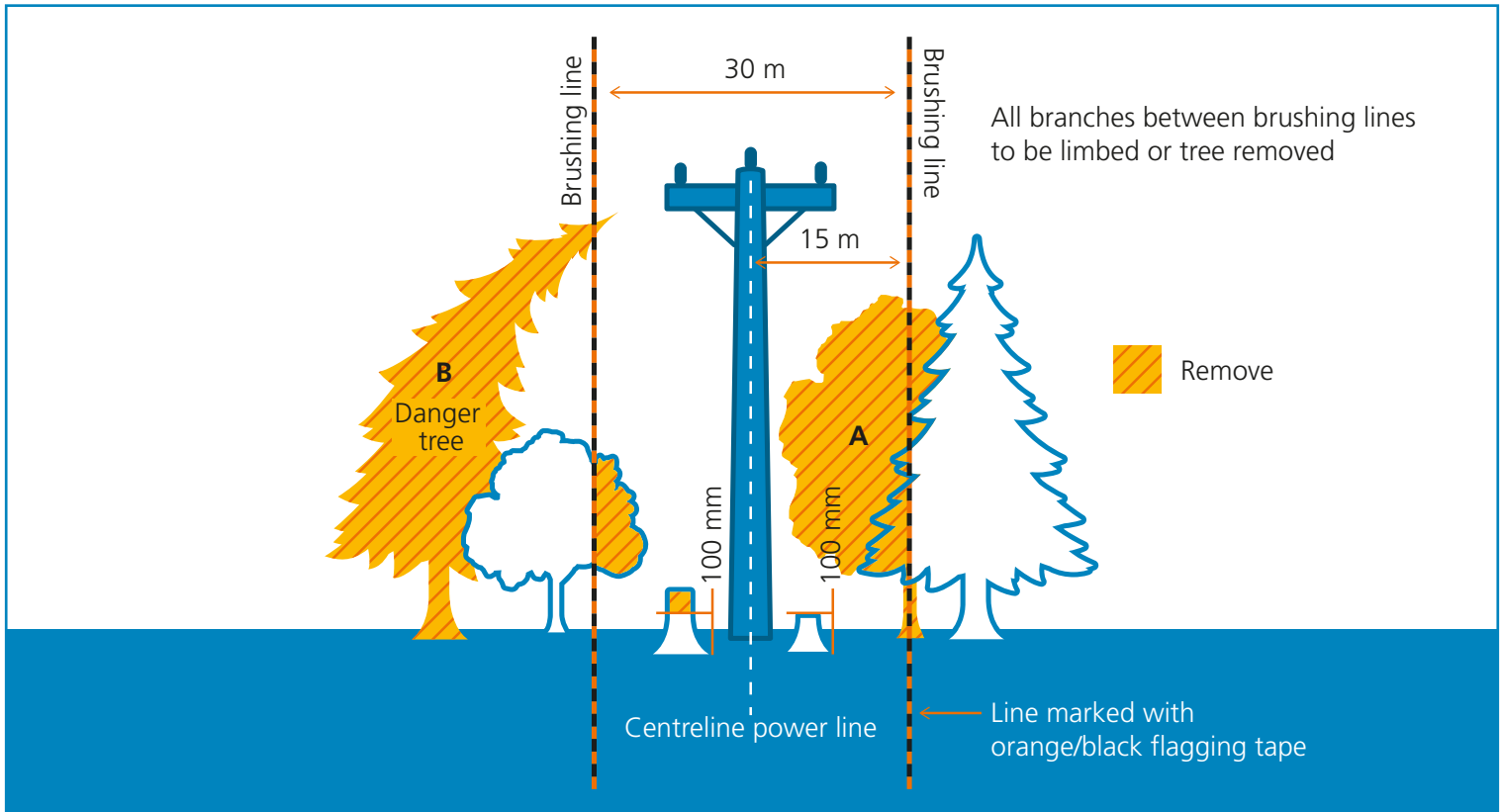


Brushing Requirements

FOR THREE-PHASE HIGH VOLTAGE TRANSMISSION LINES > 34.5 KV



- 1) All trees, limbs, deadfall and brush are to be removed between brushing lines indicated with orange with black-striped flagging.
- 2) Limbing must be completed to the top of trees at the brushing line or the tree must be removed.
- 3) The customer has the option of aerial trimming on the tree (see Tree A in diagram). This service can be provided by the construction crew at an approximate cost to the customer of \$275/hr. This extra charge is not included in the construction estimate. If the customer does not accept this option, Tree A must be removed.
- 4) All stumps are to be cut flush or as close as possible to the ground, not to exceed 100 mm from ground level.
- 5) All trees leaning toward the brushed right-of-way are considered "danger trees" and must be removed (see Tree B in diagram).
- 6) All dead or rotting trees adjacent to the right-of-way must be removed.
- 7) All flagging done on-site indicates absolute minimum brush removal; the right-of-way is to be cleared of all vegetation and obstacles that are incompatible with the operation of an electrical system.