

May 9, 2019

Stephanie Whitehead  
Yukon Energy Corporation  
2 Miles Canyon Road  
Whitehorse, YT Y1A 6L4

Dear Stephanie Whitehead,


**Re: New Thermal Generating Facility Maps**

Please find enclosed the proposed thermal generating facility location and interconnection maps completed for Yukon Energy Corporation as part of the Thermal Generation Planning Project. The five (5) potential sites being considered are:

1. Takhini Site
2. Whitehorse Lagoon Site
3. Whitehorse Landfill Site
4. Whitehorse Diesel Plant ("P126") Site
5. Ta'an Kwacha'an Council C-28B ("TKC") Site

Should you have any questions regarding the work completed, please do not hesitate to contact us.

Sincerely,

A handwritten signature in blue ink, appearing to read 'Lindsay Thompson', is written over a faint, light blue circular background.

Lindsay Thompson, P.Eng.  
Engineer









**Notes**

1) The layout shown in this drawing is preliminary and will be refined in future planning stages.

**Legend**

Power Line

Road

75 m

Imagery Date: 2018  
Imagery via Google Earth, © 2019 DigitalGlobe

**Interconnection Route**  
Redirection of Existing L172 with Dual-Circuit Over-Head Stuctures to the Switching Station

L172 - Takhini-Riverside  
138kV Transmission Line

**Switching Station**  
Includes Interconnection Step-up from 4.16kV to 138kV

**Interconnection Route**  
40m Dual-Circuit 4.16kV Under-Ground Cable

**Power Plant**  
20MW Thermal Generation  
with Fuel Storage  
Options: Diesel or LNG

**Access Road**  
New Road from Existing Dirt Road to Site  
and Additional Upgrades of Dirt Road

DRAWING NO.	DESCRIPTION
	REFERENCE DRAWINGS

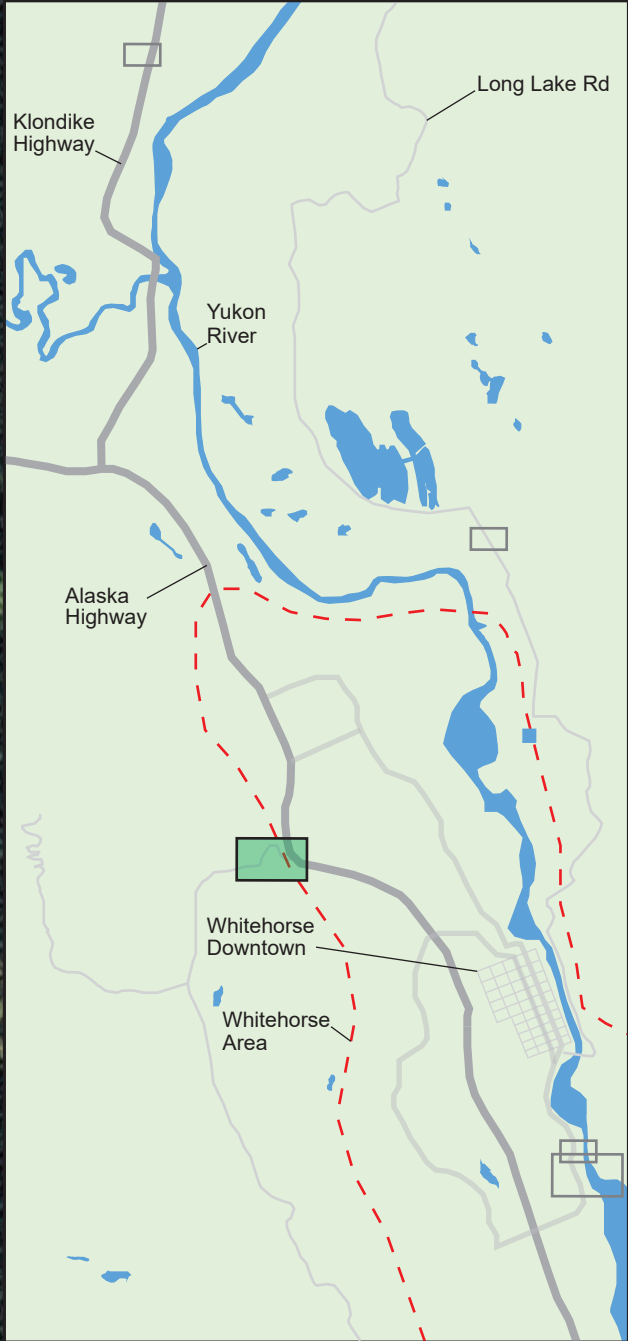
REV.	DATE	DESCRIPTION	DESIGN	DRAWN	CHCK'D	APP'D
0	MAY/8/2019	INITIAL RELEASE	FA	FA	PH	PH
REVISION HISTORY						

Midgard Consulting Inc.  
Suite 828 - 1130 West Pender Street  
Vancouver, BC, Canada V6E 4A4  
+1 (604) 298 4997 midgard-consulting.com

DESIGNED	F. AMBROSSON	MAY 8, 2019
DRAWN	F. AMBROSSON	MAY 8, 2019
CHECKED	P. HELLAND	MAY 9, 2019
APPROVED	P. HELLAND	MAY 9, 2019

CERTIFICATION	CLIENT YUKON ENERGY CORPORATION			
	PROJECT 2019 THERMAL GENERATION PLANNING			
	DRAWING LAYOUT MAP - LAGOON SITE			
	THIS DRAWING PROVIDED FOR INFORMATION ONLY			
	PROJECT NUMBER 0326	DOCUMENT NUMBER D014-DWG	SHEET NUMBER 1 OF 1	REV. 0





**Notes**

1) The layout shown in this drawing is preliminary and will be refined in future planning stages.

**Legend**

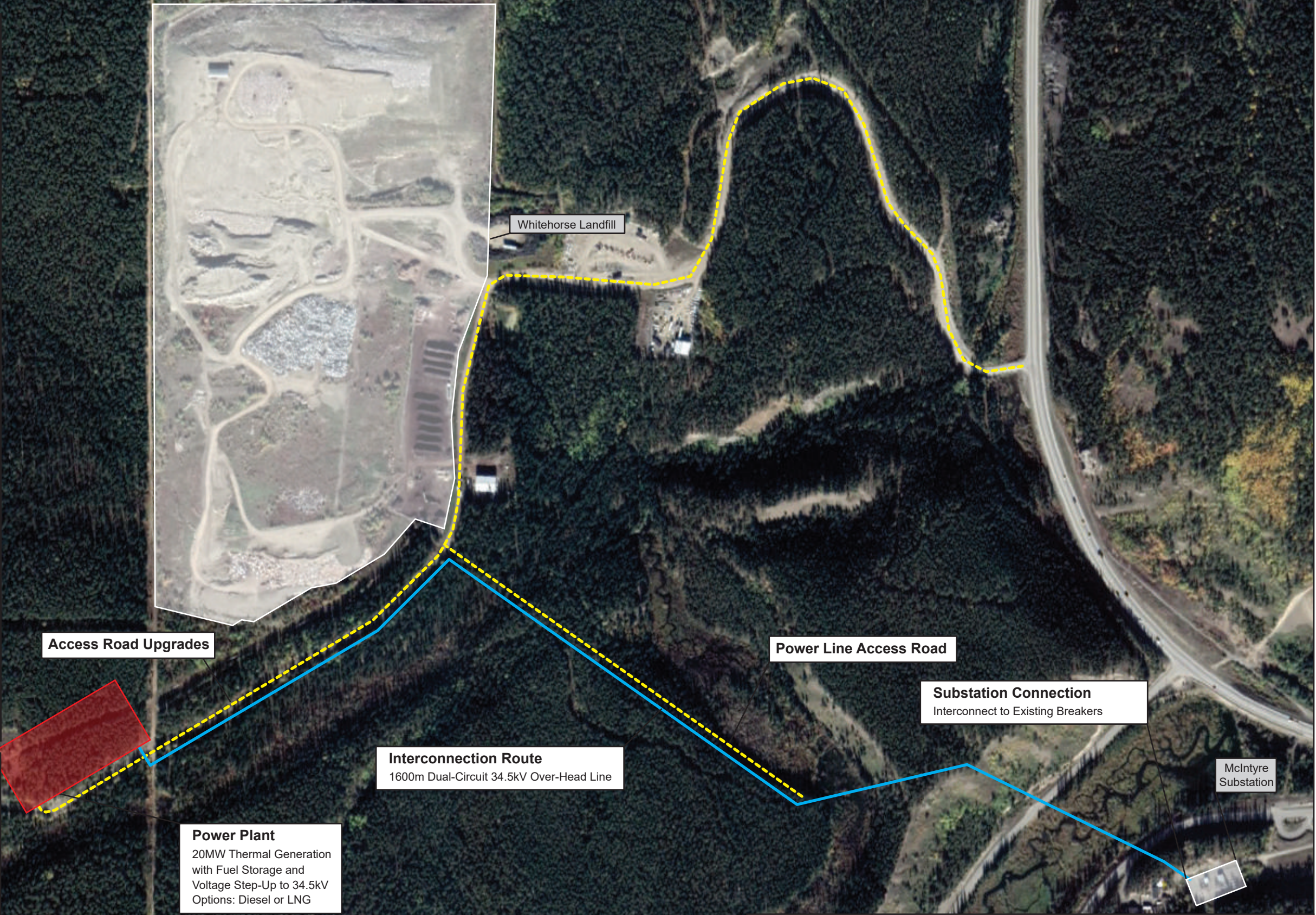
Power Line

Road

200 m

Imagery Date: 2018  
Imagery via Google Earth, © 2019 DigitalGlobe

N



DRAWING NO.	DESCRIPTION
	REFERENCE DRAWINGS

REV.	DATE	DESCRIPTION	DESIGN	DRAWN	CHK'D	APP'D
0	MAY/8/2019	INITIAL RELEASE	FA	FA	PH	PH

**Midgard Consulting Inc.**  
Suite 828 - 1130 West Pender Street  
Vancouver, BC, Canada V6E 4A4  
+1 (604) 298 4997 midgard-consulting.com

DESIGNED	F. AMBROSSON	MAY 8, 2019
DRAWN	F. AMBROSSON	MAY 8, 2019
CHECKED	P. HELLAND	MAY 9, 2019
APPROVED	P. HELLAND	MAY 9, 2019

CERTIFICATION		CLIENT			
		YUKON ENERGY CORPORATION			
		PROJECT			
		2019 THERMAL GENERATION PLANNING			
		DRAWING			
		LAYOUT MAP - LANDFILL SITE			
		PROJECT NUMBER	0326	DOCUMENT NUMBER	D012-DWG
		SHEET NUMBER	1 OF 1	REV.	0







