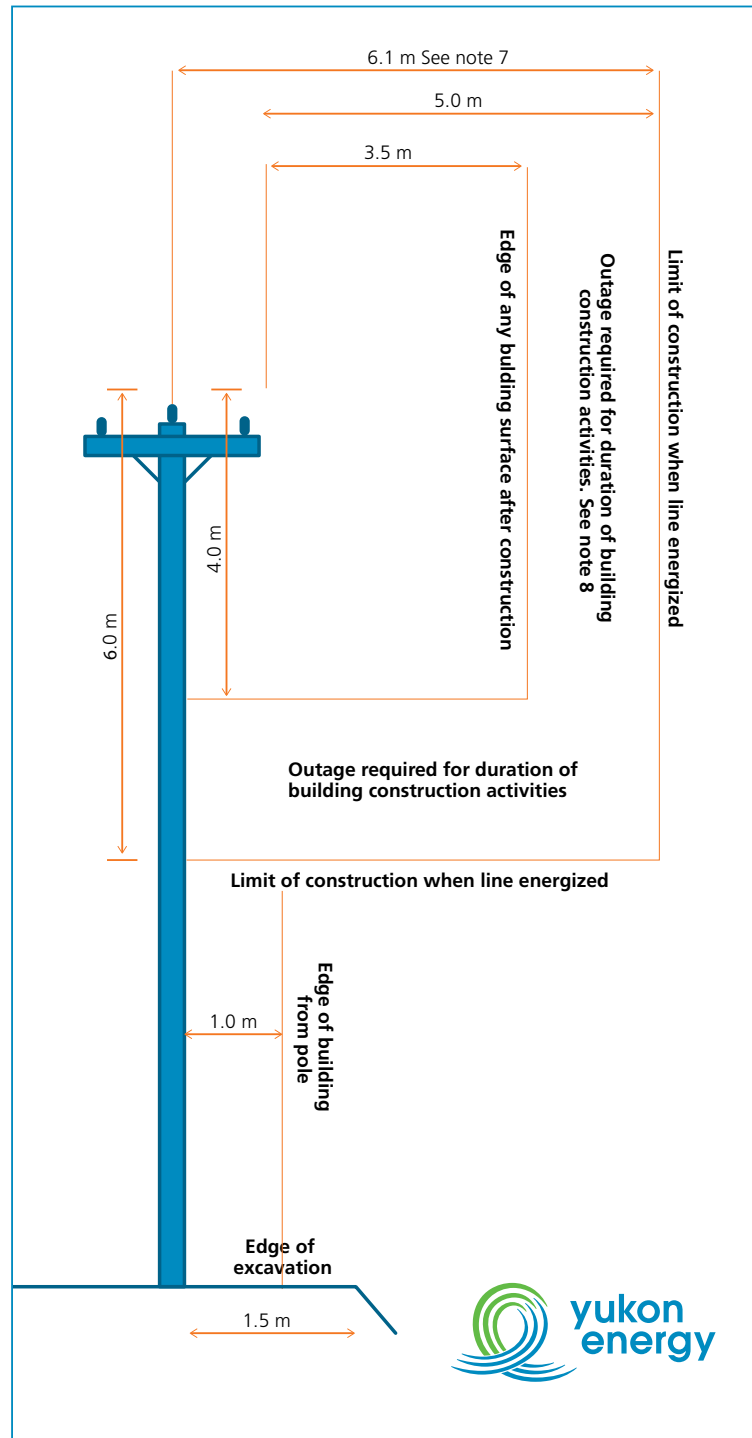


urban build set-back requirements

FOR THREE-PHASE HIGH-VOLTAGE LINES UP TO 34 KV

- 1) These separations are guidelines only. Engineering judgement is needed for each site.
- 2) Separations apply to all energized equipment, and to equipment that could become energized. This includes phase wires, jumper wires, transformers, arresters on riser structures, and the neutral wire.
- 3) Separations apply to sheltered spans only. A sheltered span is where there is a building at line height within 30 m.
- 4) Transformers need to maintain 6.0 m radial (lines of sight) to windows, doors and vents.
- 5) The separations apply to spans up to 55 m in length for #6 ACSR, #4 ACSR, #2 ACSR, 1/0 ACSR, 2/0 ACSR, 266 ACSR, and 297 ACSR. Other conductors and span lengths need to have calculations done on conductor swing to find applicable separations.
- 6) Separations have 0.3 m safety margin included in the calculation.
- 7) 6.1 m separation assumes typical tangent three-phase crossarm.
- 8) Outages must occur during daylight hours. Outages can only be granted as a last resort, and may not be granted due to utility operation requirements.



Prepared By			
Reviewed By			
Approved By		Sign and Seal	Permit to Practice